

Graphical Networks netTerrain

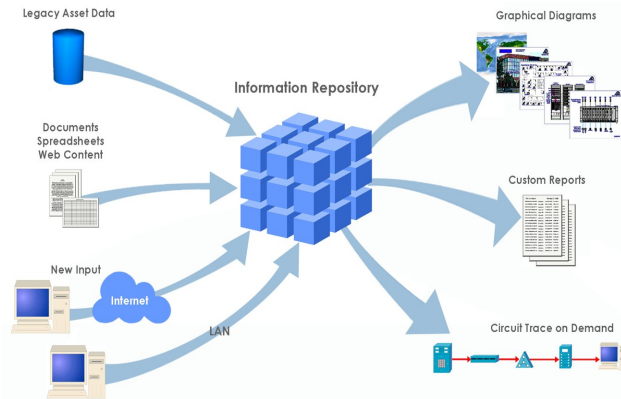
netTerrain, a new Data Center Infrastructure Management System

Overview

Are you in a spreadsheet nightmare, trying to manage your connectivity and assets and looking for an automated way of visualizing your data center?

Graphical Networks introduces netTerrain, a cost-effective IT Inventory Documentation System and System Mapping solution that helps organizations improve the management of data centers and related assets.

The Problem: IT inventory information is typically maintained in unconnected files and other data sources scattered around the enterprise. Such as spreadsheets, legacy databases, service desk, network and asset management systems, even notes or employee knowledge.



A lack of a usable and centralized repository of asset information has a devastating effect on the bottom line:

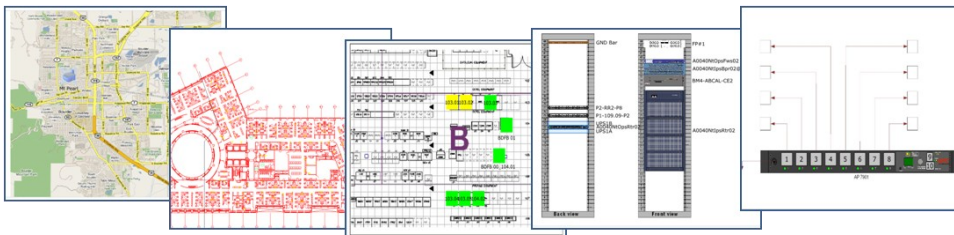
- Difficulty in troubleshooting leading to excessive repair times
- Provisioning decisions and implementation take too long
- Assets are scattered and unaccounted for, resulting in unnecessary purchases
- Bandwidth is misallocated and circuit use isn't maximized

In short, total cost of ownership soars because you can't manage a system you don't understand!

Our Solution:

A centralized, multi-user IT Inventory Database that automates and simplifies the management and visualization of the entire IT infrastructure, including physical space, networks, racks, devices, subcomponents and links.

netTerrain can be implemented in a matter of weeks, not



Why netTerrain?

- Best of Breed, feature rich Data Center Infrastructure Management System
- Most automated DCIM system on the market with built-in Adapters/Parsers and Discovery
- 100% web based visualization
- No third party software required
- Inside and Outside Plant Inventory Management capabilities
- Simple licensing schema with no restrictions on number of users or elements to manage



netTerrain Highlights:

- > Track IT Configuration Items and Links in a multi-user environment
- > In depth Web Visualization to show all Data Center Items and its attributes, such as cabinets, power, devices, cables, networks and applications
- > Create Circuit Layout Records (CLRs) and CMDB views on demand
- > Built-in SNMP Discovery and Adapters for faster deployment
- > Manage Outside Plant elements
- > Comprehensive customizable Reporting engine and Audit Trail

Key Benefits:

- > A picture of the as built environment
- > A complete visual understanding of IT infrastructure
- > See the effects of IT to the business
- > Savings from duplication of resources
- > Reduce business downtime and Mean Time To Repair
- > Reduction in labor - real-time documentation and visualization
- > Easy to plan changes
- > Comply with Corporate standards and mandates

Key Features:

- **Scalable** multi-user **repository** using SQL Server 2005/2008 for the backend.
- 100% web-based **data-driven visual diagrams** to increase enterprise-wide accessibility to mission-critical data.
- A corporate **catalog of vendor specific devices** to automate the creation of data and power ports, cards, icons and backgrounds and yield an error-free data-entry experience. Easily edit and add items to the catalog.
- **On-demand connectivity** views for what-if scenarios and data/power troubleshooting.
- Synchronize the 'as-built' and 'as-planned' network and automate the data-entry process using our built-in **Adapters** and **SNMP-based discovery engine**.
- **Provision cabinets** with automated rack unit placement, vendor specific icons and space reservation capabilities. Color code cabinets on floor plans based on custom criteria.
- Manage **Data and Power cabling**, with built-in business rules for fast data-entry and consistency. Map cables to logical circuits and create end-to-end services.
- **Visualize the relationships and dependencies** between users, groups, applications, power, racks, equipment, and networks to quickly identify the root causes of problems. Launch Impact-analysis diagrams on demand.
- Automatically generate complete **circuit paths on the fly**, including all related ports, cards, and equipment for faster troubleshooting time. Eliminate the need to manually trace circuits and connections.
- Manage **Outside Plant** resources, such as Towers, Antennas, Conduits, Manholes, Splices, fiber Paths and render them visually on maps.
- **Full Audit Trail** engine to identify changes in the database by user, timestamp, machine, entity and other attributes.
- Customizable **Reporting-Engine** with built-in summary and detailed reports of Assets and other Data Center Elements.



P.O. Box 83106

Gaithersburg, MD 20883

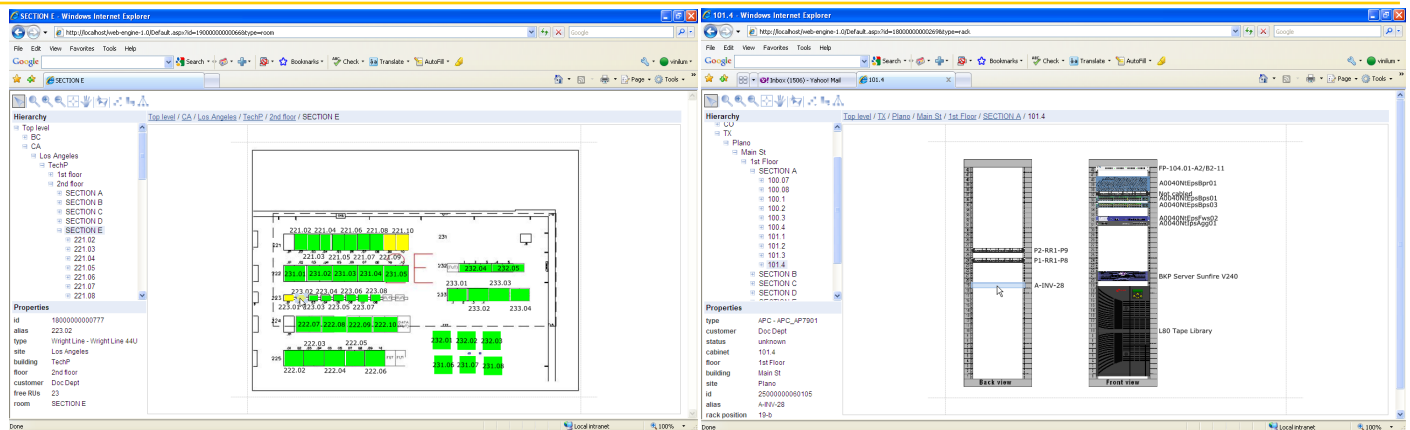
USA

Phone: 301-947-6714

Fax: 301-560-6631

E-mail:

sales@graphicalnetworks.com



Top Data Center View Diagram

Cabinet View

Server Software Requirements:

- MS SQL Server 2005/2008 with SQL Server Management Studio
- OS: Windows 2003, Windows 2008 Server
- MS IIS 6.0 or better
- .NET Framework 3.5

Server Hardware Requirements:

- Processor: Pentium IV or better (x86)
- RAM: 2GB or better
- HD Space: dependent on Data Center characteristics (minimum 4GB free space for initial deployment)