

# Graphical Networks graphTerrain

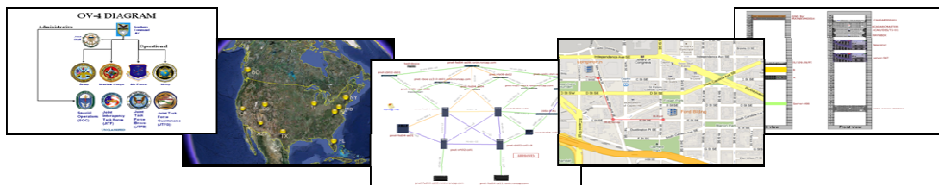
## graphTerrain, a new Diagramming Tool

It's easy to store enterprise information in spreadsheets, databases and manuals, but it's not easy to understand information when depicted that way. The ability to access information about the organization's systems and processes is critical for business continuity, surviving the loss of key employees, and making smart decisions.

graphTerrain, is the ideal solution for bringing data and people together, where organizations can manage its IT and network documentation, workflows and business processes.

Unlike other diagramming tools that rely on static, single-user files that quickly become out of date, graphTerrain is based on an Enterprise-grade scalable platform for multiple users with concurrent access to diagrams. All changes on the underlying data are reflected in real-time.

Network and Server Operators, Enterprise Architects, and Help Desk support teams now have a single source to disseminate information and concurrently view and edit diagrams, collaborate, and make comments all through a standard web browser.



### Key Benefits:

- > **Achieve Regulatory Compliance.** Achieve compliance with accurate documentation, maintaining regulatory and security standards such as Health Insurance Portability and Accountability Act (HIPAA), Payment Card Industry Data Security Standard (PCI DSS), Sarbanes Oxley Section 404 Documentation requirements, and Clinger Cohen Act.
- > **Improve Employee Communication.** Share and bring teams and information together in a collaborative, visual, and online environment.
- > **Accelerate Troubleshooting and Reduce Mean-Time-to-Repair.** Troubleshoot problems faster and reduce Mean-Time-To-Repair by quickly determining the root cause of incidents.
- > **Reduce IT costs.** Optimize your infrastructure by understanding the utilization of your install base and reduce the time spent in diagramming the IT infrastructure.

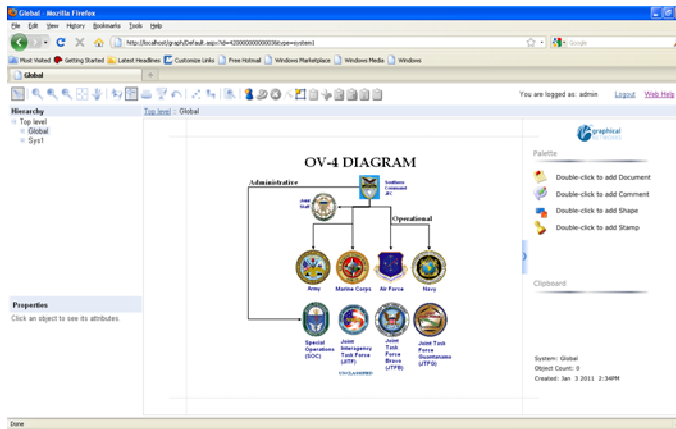
- > **Hierarchal Diagrams** — Dynamic, data-driven visuals to quickly understand Networks, Systems, and Business Processes
- > **Embedded Web-based Data**— Access real-time configurable attributes for any node or link with a simple click
- > **IT Best Practices Support**— provide up-to-date visual diagrams of configuration items and how they support the delivery of key IT services to enable ITIL best practices for configuration and change management
- > **Distributed** — Access maps and diagrams anywhere, anytime
- > **Easy To Use**—Dramatically improve user adoptability and experience to create diagrams easier and faster
- > **Seamless Migration**—Built-in CA netViz and spreadsheet import feature to automate the population of web diagrams with a simple set of clicks
- > **Feature Rich Collaboration**— Share Enterprise knowledge and status of work with built-in comments, documents, rubber stamps and shapes
- > **Enterprise-grade compliance**— With an embedded reporting engine and audit trail, administrators can provide accurate data aggregation and instantly know who changed what and when

## Key Features:

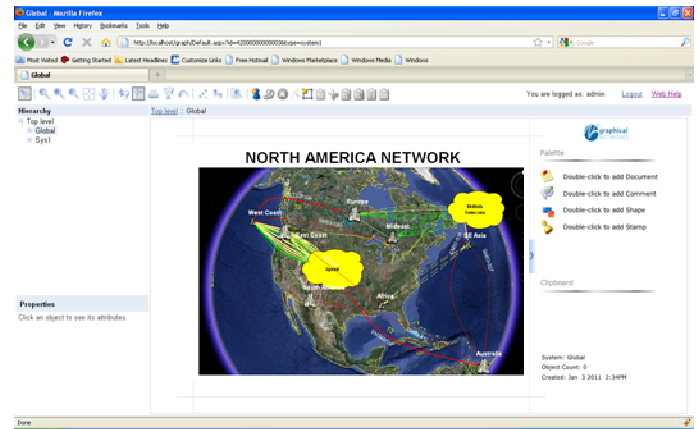
- **100% web-based data-driven visual diagrams** to increase enterprise-wide accessibility to mission-critical data.
- **Import existing spreadsheets and CA netViz projects** for fast implementation time
- Multiuser and concurrent platform with the ability to **create and edit web diagrams, add comments, and embed documents for real-time collaboration.**
- Quickly understand infrastructure related business processes through **drill-down hierarchy navigation.**
- **Create Visual and graphic overrides** to track attributes based on custom criteria.
- Run **Audit Trails and reports** to understand who changed what, when.
- **Fast Searching Capabilities** to find specific items in a matter of seconds.



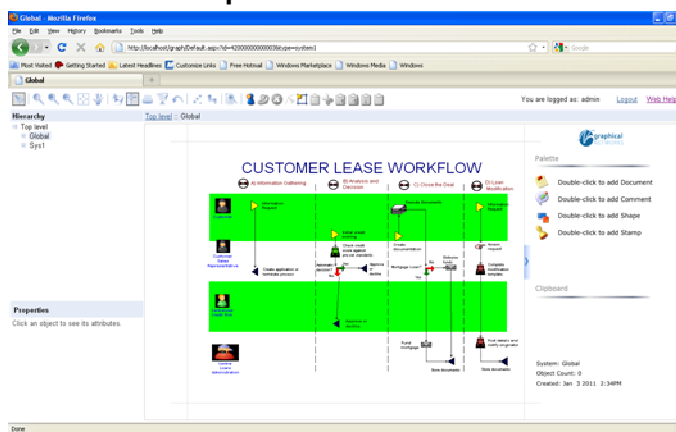
4800 Hampden Lane, Suite 202  
Bethesda, MD 20814  
USA  
Phone: 301-947-6714  
Fax: 301-560-6631  
E-mail:  
sales@graphicalnetworks.com



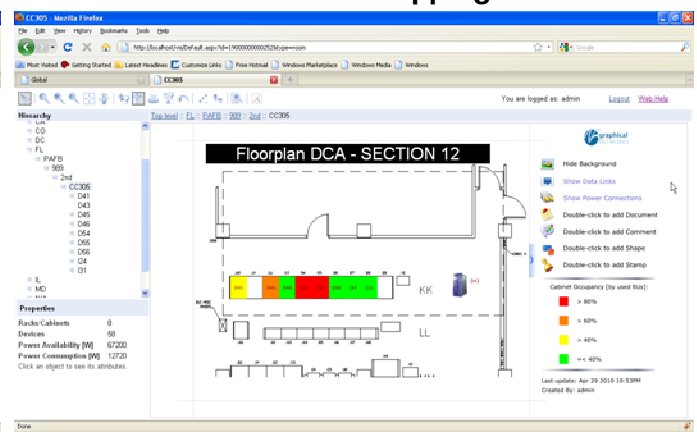
**Enterprise Architecture**



**Network Mapping**



**Workflow and Business Processes**



**Physical Infrastructure**

## Server Software Requirements:

- MS SQL Server 2005/2008 Enterprise or Express with SQL Server Management Studio
- OS: Windows 2003, Windows 2008 Server, Windows XP Professional, Windows Vista and Windows 7
- Internet Information Services 6.0 or better

## Server Hardware Requirements:

- Processor: Intel Core 2 Duo
- RAM: 4GB or better
- HD Space: 10 GB free space